



**IMPORT OF  
ALL TYPES OF  
GEAR BOX &  
ELECTRIC MOTORS**

---

[durgatransmission.com](http://durgatransmission.com)

**24/7** // **HOURS  
SERVICE**

## NMRV WORM GEAR BOX

<b>Model</b>	NMRV 030-040-050-063-075-090-0110-0130-0150
<b>Ratio</b>	1:5 To 1:100 Ratio
<b>KW</b>	0.06 kw To 15 kw
<b>HP</b>	0.08 To 15
<b>Flange</b>	56B5 To 160B5



## NRV WORM GEAR BOX

<b>Model</b>	NRV 030-040-050-063-075-090-0110-0130-0150
<b>Ratio</b>	1:7.5 To 1:100 Ratio
<b>Kw</b>	0.06 kw - 15 kw
<b>Hp</b>	0.8 To 15
<b>Output Range</b>	2.6 nm - 300 nm



## NMRV DOUBLE STAGE WORM GEAR BOX

<b>Size</b>	NMRV 030-040-050-063-075-090-0110-0130-0150
<b>Power</b>	0.06 kw To 15.0 kw
<b>Ratio</b>	1:5 To 1:1000 Ratio
<b>Cases</b>	Up To 90 In Die-Cast Aluminum Alloy & 110 To 150 Ht200 Cast Iron



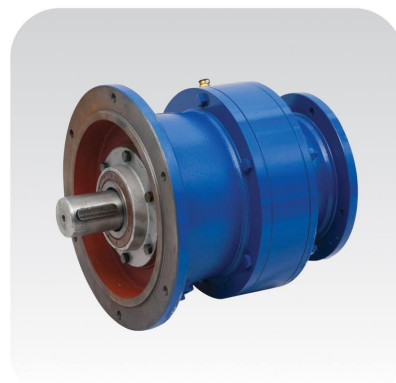
## CYCLOID GEAR BOX

<b>Range</b>	0.50 To 100 Hp
<b>Ratio</b>	11:1, 17:1, 23:1, 29:1, 35:1, 43:1, 59:1, 71:1, 87:1
<b>Mounting Type</b>	Foot Mounting
<b>Application</b>	Line / Kiln / Convair & All Ceramic Industrial
<b>Industries</b>	Material Handling, Pharma, Packaging, Food Processing, Ceramic etc.



## FLANGE MOUNTED CYCLOID GEARBOX

<b>Range</b>	0.50 To 100 Hp
<b>Ratio</b>	11:1, 17:1, 23:1, 29:1, 35:1, 43:1, 59:1, 71:1, 87:1
<b>Mounting Type</b>	Flange Mounting
<b>Industries</b>	Material Handling, Pharma, Packaging, Food Processing, Ceramic etc.



## WPA GEAR BOX

<b>Range</b>	WPA40, 50, 60, 70, 80, 100, 120, 135, 155, 175, 200, 250
<b>Ratio</b>	1:10, 15, 20, 25, 30, 40, 50, 60
<b>Size</b>	7.5 - 100
<b>Type</b>	7.5 - 100
<b>Industries</b>	Material Handling, Pharma, Packaging, Food Processing, Ceramic, Chemical, Dyeing, Woodworking, Class Etc.





## R-SERIES HELICAL GEAR BOX

Range	From 0.12 kw To 55 kw
Ratio	9:1 To 100:1
Size	From 16 mm to 110 mm Output Shaft Diameter
Application	Packaging, Mixing, Conveyor, Cranes Ets.
Industries	Material Handling, Pharma, Packaging, Food Processing, Ceramic Etc.



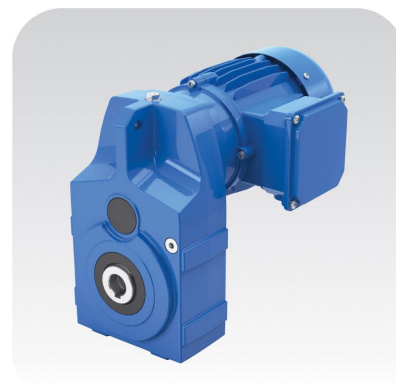
## RF SERIES HELICAL GEAR BOX

Range	From 0.12 kw To 55 kw
Ratio	9:1 Up To 100:1
Size	From 16 mm to 110 mm Output Shaft Diameter
Application	Packaging, Mixing, Cranes Ets.
Industries	Material Handling, Pharma, Packaging, Food Processing, Ceramic Etc.



## F SERIES HELICAL GEAR BOX

Rated Power	0.18 kw To 200 kw
Max. Torque	Up To 18000 N.M
Gear Arrangement	Helical Gears
Shafts Position	Parallel Shaft
Ratio	3.81 To 270.18
Installation From	Foot, Flange Shaft Mounted



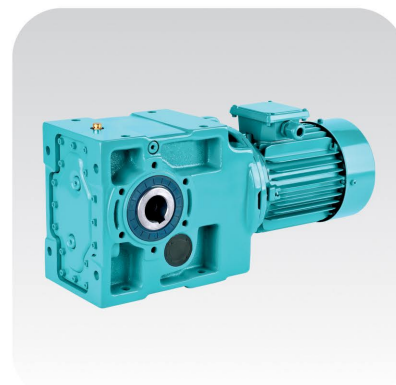
## PLANETARY GEAR BOX

<b>Range</b>	From 0.75 kw To 355 kw
<b>Ratio</b>	3:1 To 5000:1
<b>Type</b>	Planetary Gear / Ver / Cal Gear Material Handling, Pharma, Packaging, Food
<b>Industries</b>	Processing, Ceramic Etc.



## K SERIES HELICAL GEAR BOX

<b>Rated Power</b>	0.18 kw To 200 kw
<b>Max. Torque</b>	Up To 50000 N.M
<b>Gear Arrangement</b>	Hardened Helical-Bevel Gears
<b>Ratio</b>	5.36 To 178.37
<b>Installation From</b>	Foot, Flange, Shaft Mounted



## PBL HELICAL GEAR BOX

<b>Input Power</b>	0.37 kw To 11 Kw
<b>Output Torque</b>	Up To 2,764 N.M
<b>Gear Ratios</b>	1:10 To 200:1
<b>Output Options</b>	Solid
<b>Motor Sizes</b>	71B5 To 160B5
<b>Application</b>	Blowers, Conveyors, Cranes, Crushers, Extrusion, Fans, Feeders, Fluid Transport, Gantry Crane, Overhead Crane, Travel Drives, Agitation.



## LD CD R SERIES HELICAL GEAR BOX

<b>Range</b>	0.75 Kw To 4 Kw
<b>Ratio</b>	6.83:1, 11.78:1, 17.15:1, 35.43:1, 46.75:1, 58.53:1
<b>Application</b>	Link/Klin/Convair & All Ceramic Industrial
<b>Industries</b>	Material Handling, Pharma, Packaging, Food Processing, Ceramic etc.



## LD CD RF SERIES HELICAL GEAR BOX

<b>Range</b>	0.75 Kw To 4 Kw
<b>Ratio</b>	6.83:1, 11.78:1, 17.15:1, 35.43:1, 46.75:1, 58.53:1
<b>Application</b>	Link/Klin/Convair & All Ceramic Industrial
<b>Industries</b>	Material Handling, Pharma, Packaging, Food Processing, Ceramic etc.



## LD CD K SERIES HELICAL GEAR BOX

<b>Rated Power</b>	0.75 Kw To 3 Kw
<b>Gear Arrangement</b>	Hardened Helical - Bevel Gears
<b>Ratio</b>	6.83:1, 11.41:1, 15.25:1, 19.86:1, 24.93:1, 29.61:1
<b>Installation From</b>	Shaft Mounted





## FLANGE TYPE ELECTRIC MOTOR

Range	0.18 kw to 315 kw
Type	Durga Transmission - Havells, Crompton, ABB, Lubi
Application	Power Intensive Industries Including Chemical Industries, Ceramic Industries, Paper Industries, Etc. Where In There Is Constant Load For Long Duration.
Industries	All Process Industries



## FOOT TYPE ELECTRIC MOTOR

Range	0.18 kw to 315 kw
Type	Durga Transmission - Havells, Crompton, ABB, Lubi
Application	Power Intensive Industries Including Chemical Industries, Ceramic Industries, Paper Industries, Etc. Where In There Is Constant Load For Long Duration.
Industries	All Process Industries



## BRAKE MOTOR

Range	0.18 kw to 75 kw
Type	Durga Transmission - Havells, Crompton
Application	Power Intensive Industries Including Chemical Industries, Ceramic Industries, Paper Industries, Etc. Where In There Is Constant Load For Long Duration.
Industries	All Process Industries



FACILITIES WE PROVIDE

 24/7 CUSTOMER SUPPORT	 EXPERT TEAM	 CLIENT- CENTRIC APPROACH	 ALL INDIA DELIVERY	 ALL INDIA SERVICE NETWORK
------------------------------------------------------------------------------------------------------------------	-----------------------------------------------------------------------------------------------------	---------------------------------------------------------------------------------------------------------------------	---------------------------------------------------------------------------------------------------------------	----------------------------------------------------------------------------------------------------------------------



Durga Transmission

8-A National Highway, B/h. Lalpar Village,  
Morbi-363 642. (Guj.) India.

<b>Hardik Patel</b> +91 98986 61805	<b>Savan Patel</b> +91 95374 95174	<b>Akshay Patel</b> +91 99097 38202
----------------------------------------	---------------------------------------	----------------------------------------

**Email:** durgatransmission@gmail.com  
**Web:** durgatransmission.com

